



— INFRASTRUCTURE FOR THE NEXT DECADE

Redefining Data Center *Energy Infrastructure.*

A proprietary solar thermal microgrid solution engineered exclusively to provide secure, behind-the-meter baseload power for critical hyperscale and enterprise loads.



ELITE.ENERGY

INFO@ELITE.ENERGY

CONFIDENTIAL & PROPRIETARY

— THE GLOBAL POWER CRISIS

The Core *Problem*

Hyperscale growth is violently colliding with aging, municipal utility infrastructure. The traditional, grid-dependent data center model is completely broken.

Data centers are consuming unprecedented levels of global energy. This creates massive grid strain, leading to localized brownouts and surging electricity costs for surrounding residential communities.

Relying on legacy utility monopolies restricts your hyperscale growth, introduces severe downtime risks, and permanently damages community relations due to municipal rate hikes.

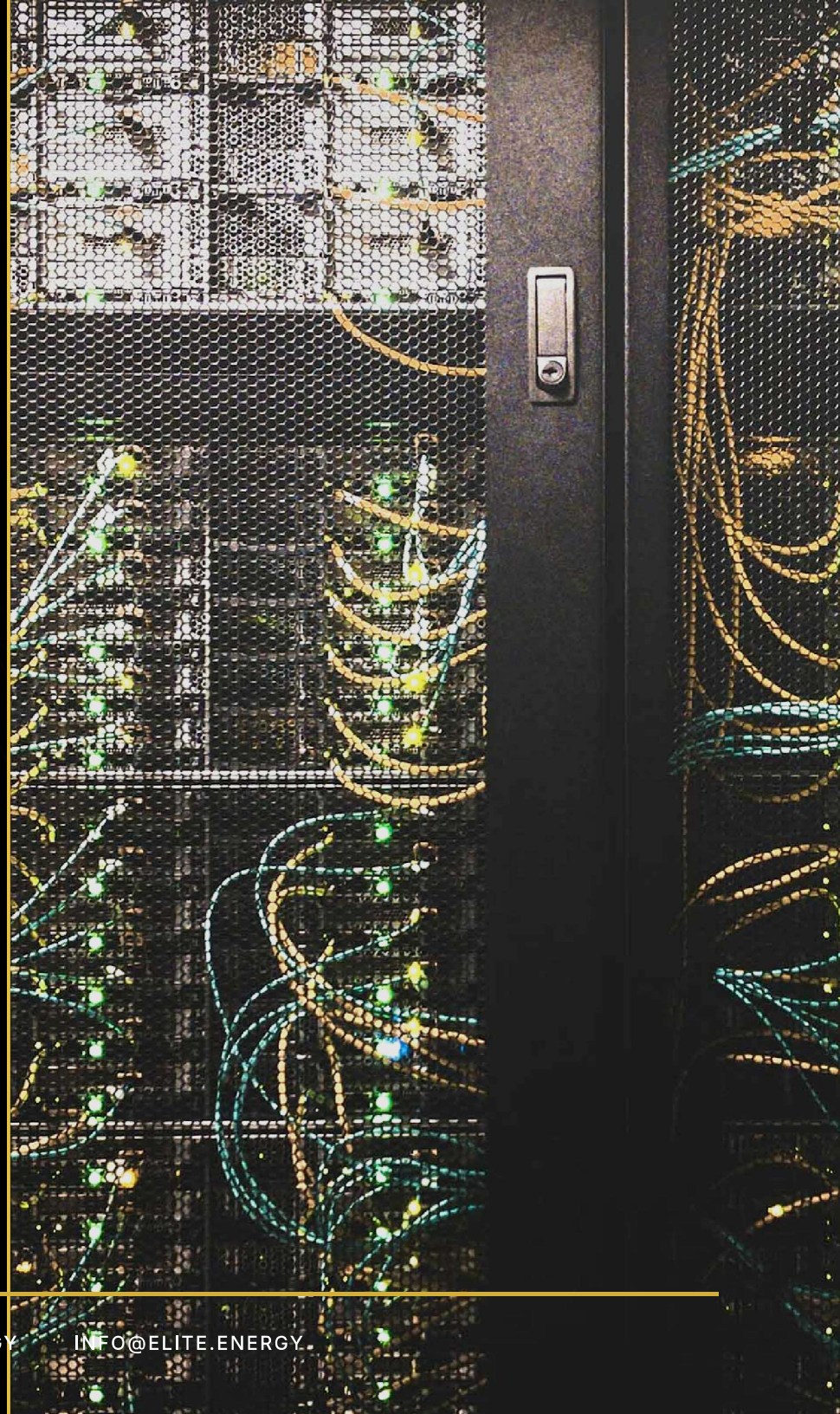
You can no longer afford to share power with the public grid.



INDUSTRIAL VALIDATION

How Well Does *This Work?*

- / 20+ years of continuous 7MW performance using waste heat at the IBM semiconductor plant.
- / Won an ASHRAE Award in 2007 for this project's performance.
- / This project is still in operation!



— THE BILLION-DOLLAR SOLUTION

The Elite *Power Solution*

YOUR INFRASTRUCTURE PARTNER

Elite Energy

Your dedicated infrastructure partner and exclusive representative. We bridge the gap between hyperscale data center demands and revolutionary off-grid power generation.

THE ECOSYSTEM

The Elite Power System

An ultra-high-efficiency, scalable on-site solar generation and massive-scale energy storage ecosystem. It provides dynamic load balancing, automated peak shaving, and true grid independence.

How the System *Works*

The ultimate bridge between raw solar generation and precision data center loads.

STEP 01

Solar Capture

Giant curved mirrors act like magnifying glasses, catching the sun's rays to intensely heat a special liquid inside a pipe to 850+°F.

STEP 02

Heat Transfer

This incredibly hot liquid is safely pumped away from the mirrors and pushed steadily into our secure energy ecosystem.

STEP 03

Infinite Storage

Stored in a massive Proprietary PCM Reservoir — acting like a giant thermos with zero heat leakage — for 24/7 power.

STEP 04

Clean Electricity

The stored heat spins a heavy-duty turbine and alternator, turning that motion into perfect, 24/7 clean electricity.

Key Technological *Pillars*

Grid Independence

Sever the cord to unreliable utilities. Generate pristine, predictable power entirely on-site. Become completely immune to external outages and capacity limits.

Unmatched Density

Generate massive amounts of energy on the smallest possible footprint—starting at 5+ MW in under 1/2 an acre—preserving highly valuable real estate for actual server buildings.

Community Harmony

Apply strictly zero strain on local residential grids. Eliminate the political and social friction of hyperscale deployment by producing your own power.

0%

STRAIN ON RESIDENTIAL GRIDS

99.9999%

GUARANTEED SLA UPTIME

CAT 5 RATED

HURRICANE CERTIFIED GRADE

— THE PARADIGM SHIFT

Re-engineering the *Power Dynamic*

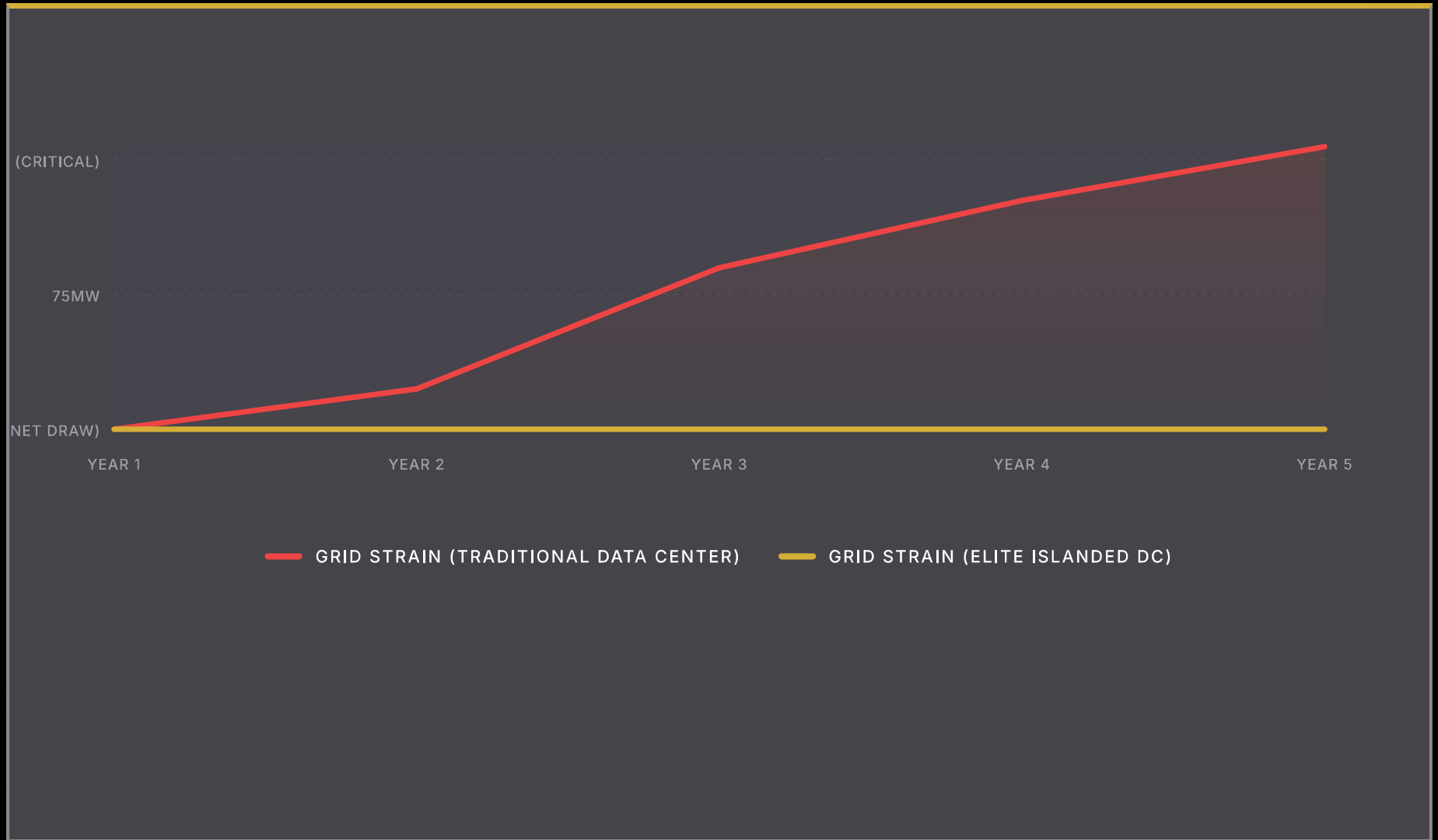
By removing your facility from the local utility draw entirely, you eliminate the residential rate hikes caused by your massive operations. **Turn community resistance and regulatory hurdles into collaborative, accelerated support.**

Simultaneously, you guarantee the absolute highest standard of uptime in the data center industry with a system built to survive extreme weather and provide secure, behind-the-meter (BTM) control.

Elite System *Specifications*

| OPERATIONAL METRIC | STANDARD GRID / SOLAR | ELITE SYSTEM (BASE) | ELITE SYSTEM (HYPERSCALE) |
|-----------------------------|--------------------------------|------------------------------|--------------------------------|
| Power Output Capacity | Subject to Utility Limits | 5MW - 25MW (Scalable) | 50MW - 250MW+ (Limitless) |
| Daily Energy Yield | Intermittent / Unreliable | 120.0 MWh (per 5MW unit) | Exponential Output |
| Spatial Footprint (for 5MW) | ~50 Acres (Standard Panels) | < 1/2 Acre (Micro-Footprint) | Vertically Scalable Array |
| Grid Strain Contribution | Extreme (Causes Brownouts) | Minimal (Peak Shaving) | Absolute Zero (Fully Islanded) |
| System Lifecycle Rating | 10-15 Years (Battery Degrades) | 25+ Years | 25+ Years |
| Uptime Reliability | 99.9% (Tier II/III standard) | 99.999% | 99.9999% (Tier IV+) |

Flatlining the *Demand Curve*





SUSTAINABLE INFRASTRUCTURE

Powering the *Future*

Elite Energy proudly presents the Elite Power System— not just a backup, but a continuous, primary power revolution. Designed to bridge the gap to sustainable infrastructure while protecting bottom-line profitability.

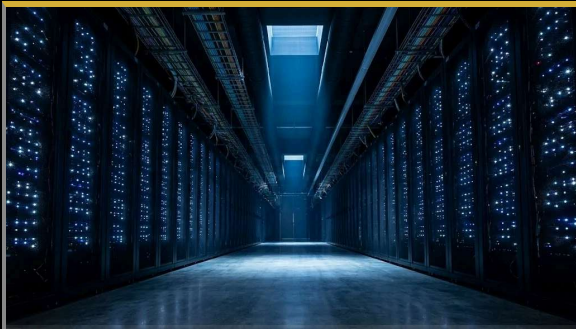
- / **Advanced Thermal Solar:** The Elite system utilizes parabolic troughs to concentrate solar energy. It completely eliminates reliance on natural gas, diesel, or any other costly, volatile consumable fuels.
- / **Seamless Power Conditioning:** The Elite ecosystem intelligently manages power distribution and storage, ensuring pure, unadulterated power delivery to highly sensitive critical server loads.
- / **Modular Scalability:** Add Megawatts precisely as your compute capacity grows, avoiding massive upfront capital expenditures and stranded capacity.



ELITE.ENERGY

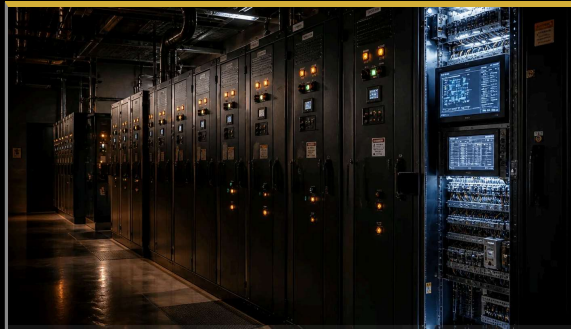
INFO@ELITE.ENERGY

Deployment *Modalities*



Hyperscale Campuses

50MW to 200MW+ deployments. Establish fully islanded, sovereign microgrids. Bypass years of utility interconnection delays.



Enterprise Colocation

Retrofit existing urban facilities. Use Elite storage for aggressive peak dispatch (especially during critical 4PM-8PM grid strain) to lower bills and guarantee SLA uptime.



Edge Compute Pods

Self-contained, modular Elite units power remote AI-inference edge data centers where utility lines simply do not exist.

Accelerated *Speed to Market*

While hyperscale developments wait 3 to 5 years for utility grid interconnects, our domestic roadmap ensures rapid deployment. Furthermore, our non-permanent structural design bypasses the years of zoning and permitting required for traditional power plants.

01

Feasibility

Immediate site footprint and load profile analysis to determine precise operational requirements.

02

USA Logistics

Standard 4-6 month manufacturing lead time enabled by our localized, domestic supply chain.

03

Commissioning

Rapid 15-45 day onsite commissioning, getting your data center fully online months ahead of schedule.

04

Power Sovereignty

Full baseload active. Enjoy zero grid interruptions and complete behind-the-meter (BTM) secure control.

CAPITAL EFFICIENCY

Unrivaled *Financial Structures*

By generating 100% solar power using Elite hardware exclusively engineered and manufactured in our North Carolina and Colorado facilities, our installations unlock unprecedented financial advantages that drastically lower your CapEx.

- / **30% Federal ITC:** Immediate Federal Investment Tax Credit applied to the project.
- / **10% Domestic Bonus:** Additional 10% credit because our products are 100% Made in the USA.
- / **MACRS Depreciation:** Qualifies for accelerated corporate depreciation schedules.

\$0

ONGOING FUEL COSTS

40%

FEDERAL TAX CREDITS

INDUSTRIAL VALIDATION

Proven *Execution*

20+

YEARS FIELD OPS

Proven reliability, industrial innovation, and zero-downtime engineering.

30+

GLOBAL INSTALLS

Trusted by enterprise giants including IBM and the Montreal Stock Exchange.

1000+

MW CAPACITY

Massively scalable manufacturing current run-rate to meet hyperscale demands.

\$8B

EXECUTION PARTNER

Partnered with Fortune 500 Global Engineering Leader KBR for massive deployments.

Take Command *of Your Power*

Eliminate grid dependency. Stabilize your costs. Scale without limits.

CONTACT US AT INFO@ELITE.ENERGY